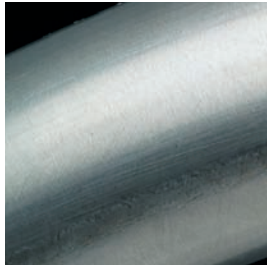


Materials



Stainless Steel

Rust-free steel with chrome and nickel alloy. Glossy, silvery material with an appealing optic that suits its robust and high-quality properties.

Advantages/ Values

- Rust-free
- Long-life
- Premium quality
- High durability
- Weatherproof

Parameters

Tensile strength 660 N/mm²,
Offset yield strength 360 N/mm²

Use

acqua Valve Basins



Hot-Dip Galvanised Steel

Corrosion-protective steel with a multiple layer iron-zinc alloy. Cold, premium-quality material with a slightly rough, blotched surface.

Advantages/ Values

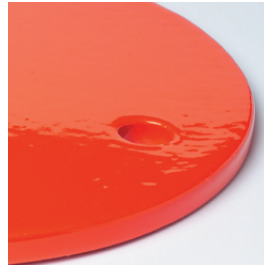
- Long-life
- Corrosion-protective
- High durability
- Weatherproof

Parameters

Thickness 6/1000,
Salt-spraying fog test 72 hours

Use

Support Feet



Powder-Coated Metal

Corrosion-protective steel with a multiple layer iron-zinc alloy and coloured, all-over powder coating.

Material with a smooth, coloured surface. Extremely stable and long-life.

Advantages/ Values

- Corrosion-protective
- High durability
- Long-life
- Weatherproof
- Abrasion-resistant

Use

Balancing Equipment with "Duck Feet" supports"



Electrogalvanised Steel

Corrosion-protective steel due to a zinc layer that has been applied with an electrogalvanising technique.

Cold, premium-quality material with a smooth surface.

Advantages/ Values

- Smooth & sealed metal layers
- Decorative appearance
- Corrosion-protective
- High durability
- Long-life

Parameters

Thickness 4/1000,
Salt-spraying fog test 40 hours

Use

Screws



Dacromet

Outstanding corrosion-protective steel with a mineral zinc and aluminium alloy.

Silvery surface that enhances screws and makes them more resistant.

Advantages/ Values

- Outstanding corr.-resistance
- No hydrogen embrittlement
- Excell. penetration properties
- Heat-resistant up to 280°

Parameters

Thickness 8/1000,
Salt-spraying fog test 840 hours

Use

Screws



Steel Cable

Multiple layered, non-rotational, galvanised round-threaded cable.

Solid steel cable that can stand up to the heaviest-duty stresses.

Advantages/ Values

- Corrosion-protective
- Long-life
- Stable
- Elastic
- Flexible
- Weatherproof

Parameters

Minimum break-point 65.74 kN/mm²

Use

Cableways



Brass

Heavy metal with a copper-zinc alloy.

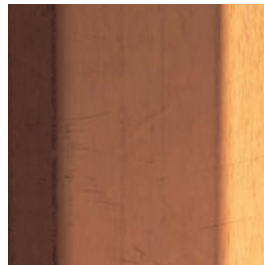
Gold-coloured, cold material.

Advantages/ Values

- Highly tensile
- Wear-resistant
- Corrosion-protective

Use

Bearing Bush Seesaws



Copper

Light-red, pliable heavy metal with good electrical conducting properties.

Reddish-coloured, cold metal.

Advantages/ Values

- Corrosion-protective
- Long-life

Use

Dome-Roofed Pavilions



Spring Steel

Multiple folded steel with spring properties.

Cold, elastic and extremely stable.

Advantages/ Values

- Corrosion-protective
- Extremely flexible
- Long-life
- Premium quality

Use

Spring Rockers



Polyester-Coated Steel Cable

Hercules Cable, i.e. quadruple-threaded steel inlay that is firmly coated with polypropylene.

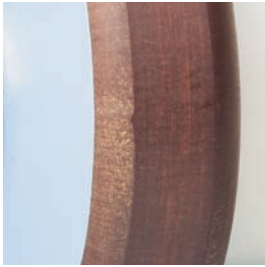
Soft, stable and elastic cable with a rough surface texture.

Advantages/Values

- Quadruple-threaded steel inlay with polypropylene coating
- Optimum abrasion-resistance
- Hand-friendly
- Cut-proof
- Soft and elastic

Use

Net Ascent Playscapes



High-Pressure Laminate, HPL

High-pressure flat laminate consisting of several cellulose channels that are impregnated with a range of different hardening artificial resins. Smooth, extremely robust material with beautiful, strong colours.

Advantages/Values

- Dense, pore-free and abrasion-resistant surface
- Easy to clean
- Flavourless and odourless
- Highly inflammable
- UV-resistant
- Anti-static

Use

Slide Entry Plates



Medium-Density Fibreboard, MDF Exterior

Medium-density fibreboard that is ideally suited for uses in outdoor areas because of its special paste application. AW100 for wet rooms. Stable wooden material with slightly rough surface.

Advantages/Values

- High bending, twisting and boring stability
- Higher mechanical resilience and pressure resistance properties than with other conventional plywood boards
- Anti-swelling properties
- Mechanical, technological and physical properties comparable to those of solid wood

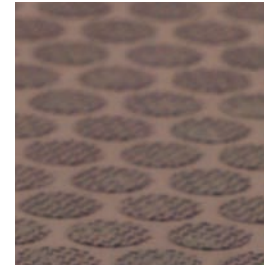
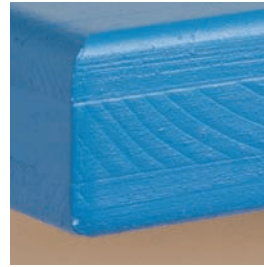


Parameters

Bending resistance 40 N/mm², Thickness 720 kg/m³, E-Module 2800 N/mm²

Use

Spring Rockers with Plywood Bodies



Hexaflor

Multiple and cross-layered, waterproof composite plywood for outdoor areas with a slip-resistant surface. Dark green wooden material with a textured, slip-resistant surface.

Benefits / advantages

- slip-resistant surface
- weatherproof
- slip-proof
- no swelling or shrinking
- abrasion-resistant surface
- no distortion

Use

basis Skipping Flower

Three-Layer Board

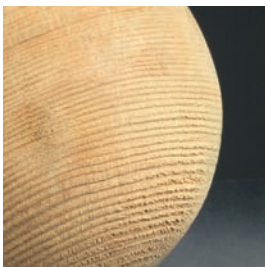
Three-layered, cross-layered adhered spruce plywood. Smooth wooden board that has a premium-quality appearance as a result of its colour and form.

Advantages/Values

- No swelling or shrinking
- No distortion
- Weatherproof as a result of a special conditioning

Use

playo Wall Elements



Pressure Impregnated Pine, Rounded Timbers

Pressure impregnated round timbers with the pith removed in accordance with RAL. Sanded round timber with green optic.

Benefits / advantages

- premium-quality wood with a 10 year's warranty against rotting and pests
- shell surface grinding
- round head (structural wooden protection)
- timbers from FSC-certified cultivation areas

Use

ibondo play systems



Pressure Impregnated Pine, Squared Timbers

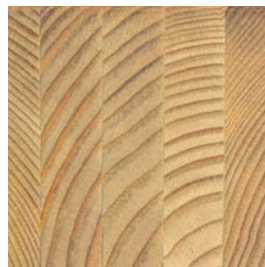
Decored pressure impregnated squared timbers in accordance with RAL. Smooth, squared timber with green optic.

Advantages/Values

- Premium-quality wood with a 10-year guarantee against rotting and pests
- All edges and ends are rounded-off
- Timbers from FSC-certified cultivation areas

Use

colorino Play Systems



Laminated Wood

Multiple-layer, waterproof, composite solid wood. Brown-glazed timber with large cross-section. Extremely stable with a solid structure.

Benefits / advantages

- high break-resistance
- good swelling and shrinking properties
- no deformation

Use

ibondo arched bridge



Ash

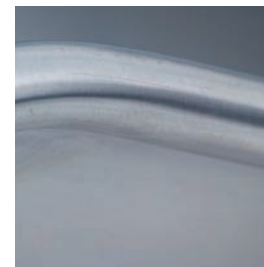
Coarse-fibred, flexible hardwood, impregnated in accordance with RAL. Very solid, hard and break-proof timber.

Advantages/Values

- Hard
- Tough and flexible
- Very little distortion

Use

Runged Ascent



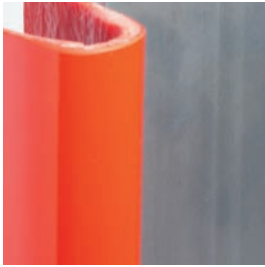
Slide Stainless Steel

Non-corrosive nickel-plated steel with a chrome alloy. Material thickness 2.5 mm. Matte silvery material with an appealing optic that suits its robust and premium-quality properties.

Benefits / advantages

- high stability
- vandalism-proof
- non-corrosive
- premium quality
- abrasion-resistant
- weatherproof
- highly durable

Materials

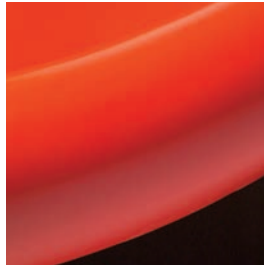


Slide GFRP with Stainless Steel Cover

Hand-laminated slides made of glass fibre polyester, sealed with a premium-quality, abrasion-resistant, 0.6 mm thick stainless steel cover. Smooth polyester combined with a premium-quality and glossy steel.

Advantages/ Values

- Low-maintenance
- Weatherproof
- Abrasion-resistant
- Long-life
- Rust-free cover

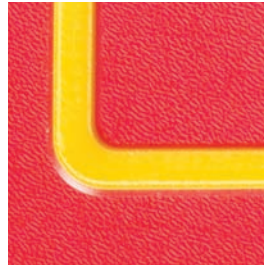


Slide GFRP

Hand-laminated slides made of glass fibre polyester and sealed with a special Gelcoat. Smooth polyester surface.

Advantages/ Values

- Weatherproof
- Abrasion-resistant
- Low-maintenance
- Long-life



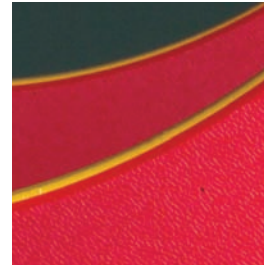
Polyethylene, PE

Weatherproof and UV-resistant polyester with a high density and high mechanical durability.

Extremely stable coloured polyester with a slightly rough surface texture.

Advantages/ Values

- Maintenance-free
- Up to 100% recyclable
- Permanent colour
- Minimum scratch sensitivity due to embossed surface
- High UV-protection
- Extremely Shock-resistant
- Easy to clean
- Free from formaldehyde, heavy metals or chlorine
- Not affected by frost



Parameters

E-Module 600 Mpa

Use

Spring Rocker Ship



Polyamide, PA

Polyester with a caprolactam basis.

Hard plastic with a smooth surface.

Advantages/ Values

- Cold-proof
- Resilient
- Extremely shock-resistant
- Abrasion-resistant
- Weatherproof

Use

Long-Distance Pipe minimondo



Makrolon

Polycarbonate plate with UV-protection.

Smooth, plastic-like material with very good durability.

Advantages/ Values

- Outstanding impact resistance
- Lighter than glass
- Good fire-resistance properties
- Can be easily printed-on
- Easy to shape
- Highly durable

Parameters

E-Module 2300 N/mm²

Use

Cupola, minimondo



Polyvinylchloride, PVC

Synthetic polyester. Stable, plastic-like material with a smooth surface.

Advantages/ Values

- Weatherproof
- Stable
- Long-life

Use

Long-Distance Voicepipe



Simocell

PVC hard foam plate. Light, elastic material with a slightly rough, rubbery surface..

Advantages/ Values

- Stable
- Flexible
- Elastic
- Weatherproof

Use

Keys, Elephant Piano



Glass Fibre Polyester, GFRP, Green

Glass fibre reinforced polyester board with green blackboard lacquer.

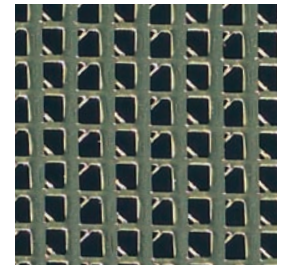
Green, stable material with a slightly abraded surface.

Advantages/ Values

- Weatherproof
- Shock-resistant
- Abrasion-resistant
- Long-life

Use

Painting Board



Polyester-Coated Polyester-Mesh

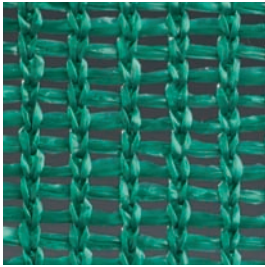
Plastic-like material with a slightly rough surface.

Advantages/ Values

- Rip-proof
- Dirt-resistant
- Easy to care for

Use

Sandpit Cover



Polyethylene Mesh

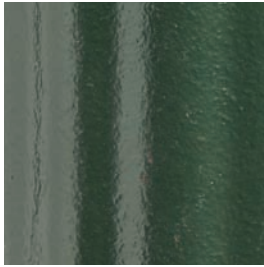
Elastic, rubber-like material with a net-structure.

Advantages/ Values

- Easy to care for
- Rot-proof
- UV-resistant
- Sun protection and sandpit cover in one

Use

Facilities requiring sun protection



Grey Cast Iron

Cast Iron material with special ferrous alloy.

Cold, steel-like material with a slightly rough surface.

Advantages/ Values

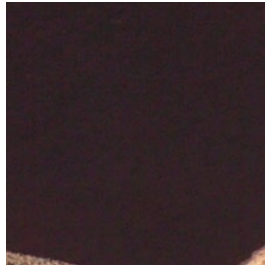
- Weatherproof
- Highly durable
- Good anti-breakage properties
- Long-life
- Self-lubricating

Parameters

Thickness 7.2 kg/dm²,
Tensile strength 400 N/mm²

Use

Suction and Pressure Pumps



Beto-Plan-Disc

Hardwood veneer with abrasion-proof film layer.

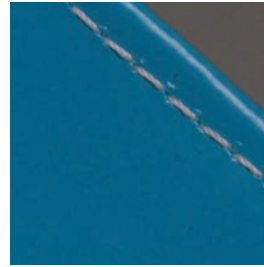
Elastic, easy to shape wooden board with a smooth, layered surface.

Advantages/ Values

- Weatherproof
- Water-permeable
- Elastic
- Flexible

Use

tema Railway



Tent Canvas

Water-repellent layered PVC plastic tarpaulin.

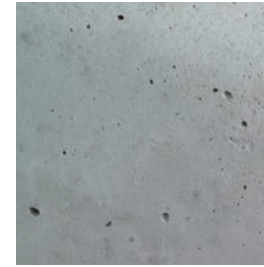
Stable, elastic polyester.

Advantages/ Values

- Weatherproof
- Water-repellent
- UV-resistant
- Extremely stable
- Long-life
- Highly inflammable
- Rip-proof

Use

Flag, Sand Raft



Concrete C25

Concrete in the durability category C25/30 and consistency area KR.

Grey, very stable and solid material.

Advantages/ Values

- Stable
- Long-life
- Maintenance-free
- Weatherproof

Parameters

Target tensile strength 35 N/mm²,
Granularity cipher 4.50

Use

Prefabricated foundation



Rubber

Elastic material with a natural rubber basis.

Soft, elastic material with a slip-reducing surface.

Advantages/ Values

- Weatherproof
- Elastic
- Resilient
- Shock-resistant

Use

Swing Seat



Rubber Granulate

Elastic ground covering with outstanding attenuation properties, made of tyre-recycled granulate.

Elastic, rubber-like material with a slightly rough surface.

Advantages/ Values

- Outstanding attenuation properties
- Available in a range of colours
- Break and tear resistant
- Compliant with EN 1177

Use

Impact Protection